

Joint Planning Conference

Federal Fiscal Year
2026-2030

Oklahoma City Airport Trust (OCAT)

OKC Will Rogers International Airport (OKC)
Wiley Post Airport (PWA)
Clarence E. Page Airport (RCE)

2026	\$39,083,575
2027	\$21,083,389
2028	\$11,929,126
2029	\$7,800,091
2030	\$13,549,184



OKC Will Rogers International Airport (OKC)

Total Federal Capital Plan:
\$65,291,997



Issues:

- Deteriorating porcelain tile
- Frequent cracking and breaking
- Generates significant noise
- Mismatched look throughout terminal

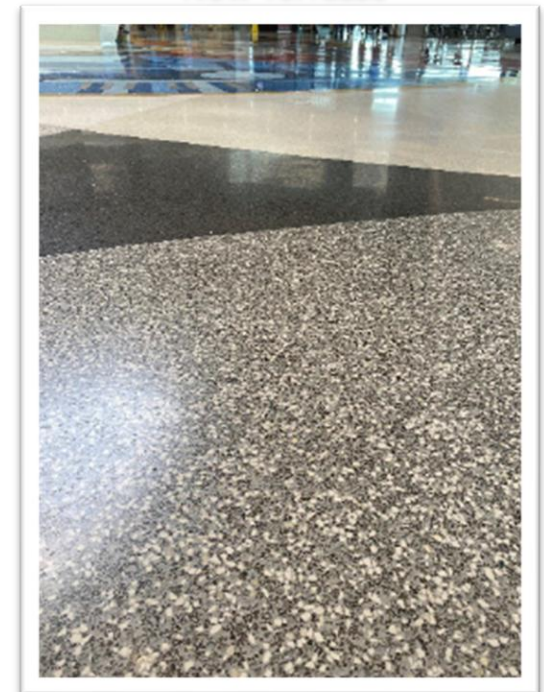
Solution:

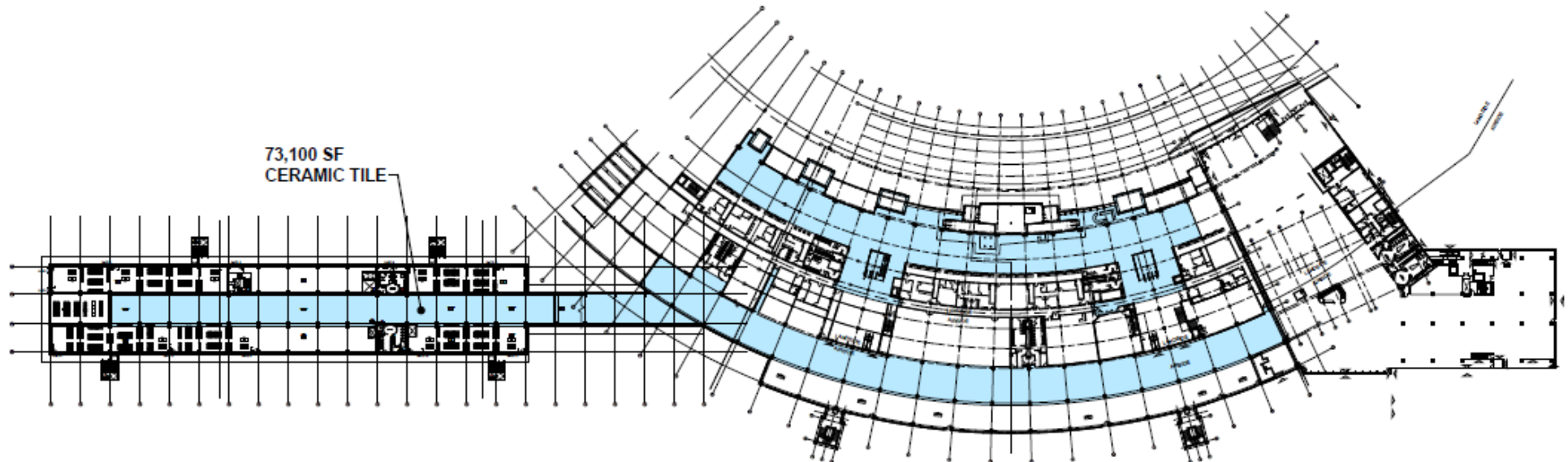
- Replace with Terrazzo flooring
 - Non-slip, high durability
 - Significantly reduces noise
 - Creates a cohesive look throughout terminal
 - ADA-compliant design

Old Porcelain



New Terrazzo





Total Budget

AIP - Entitlement	\$0
AIP – Req. Discretionary	\$0
AIG – Allocation	\$8,548,189
ATP	\$0
Earmark	\$0
OCAT	\$949,799
Total	\$9,497,988

Phase I consists of the second level of the terminal with a total of 73,100 SF.

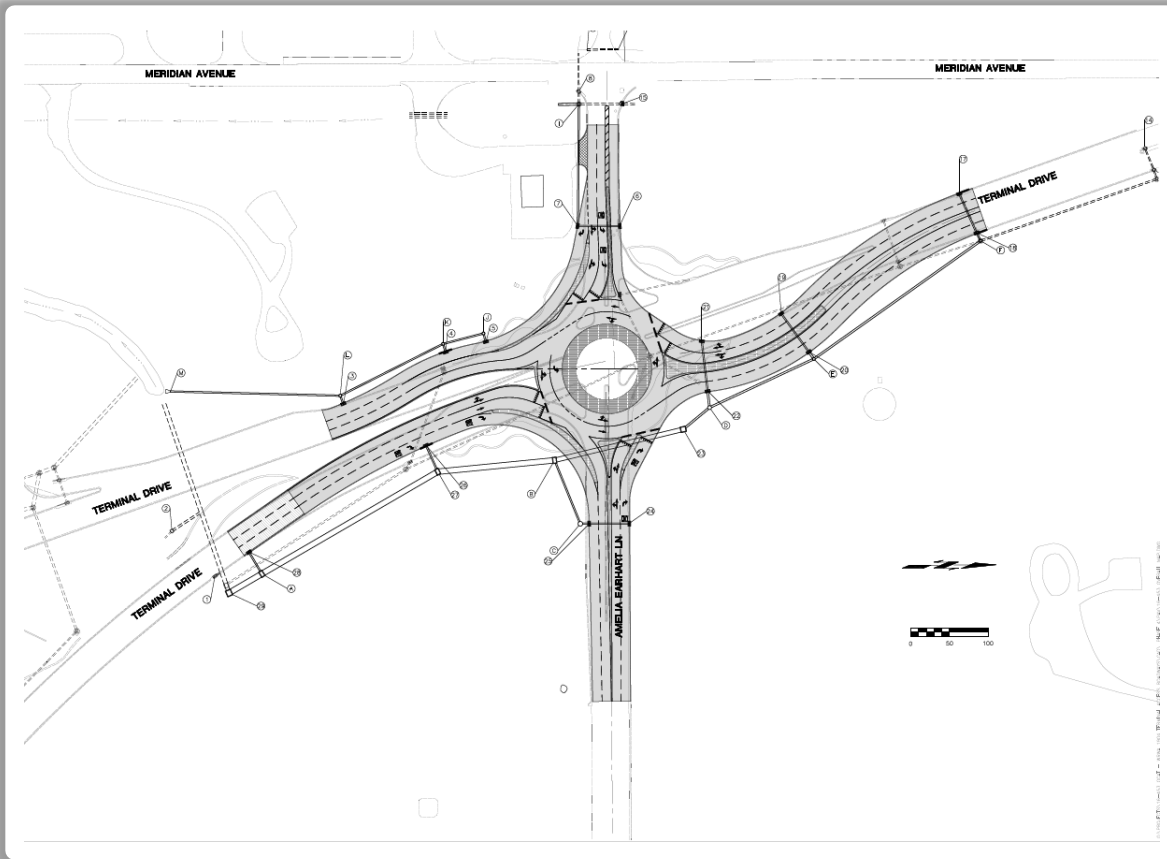
Issues:

- Rutting asphalt pavement
- Alligator cracking with uneven and bumpy sections
- Potholes
- Inadequate drainage
- High dollar maintenance

Solutions:

- Replace intersection with durable and stable surface
- Re-grading the intersection to increase drainage
- Incorporate roundabout





Total Budget

AIP - Entitlement	\$0
AIP – Req. Discretionary	\$0
AIG – Allocation	\$0
ATP	\$0
Earmark	\$5,000,000
ODAA	\$0
OCAT	\$900,000
Total	\$5,900,000

Phase IV consists of rehabilitation/replacement of approximately:

- 16,750 SY of pavement
- 4,750 LF of curb and gutter
- 2,500 LF of stormwater collection system pipe

Issues:

- Out of date access and finishes
- Limited capacity
- Aging infrastructure
- Inefficient energy and water usage

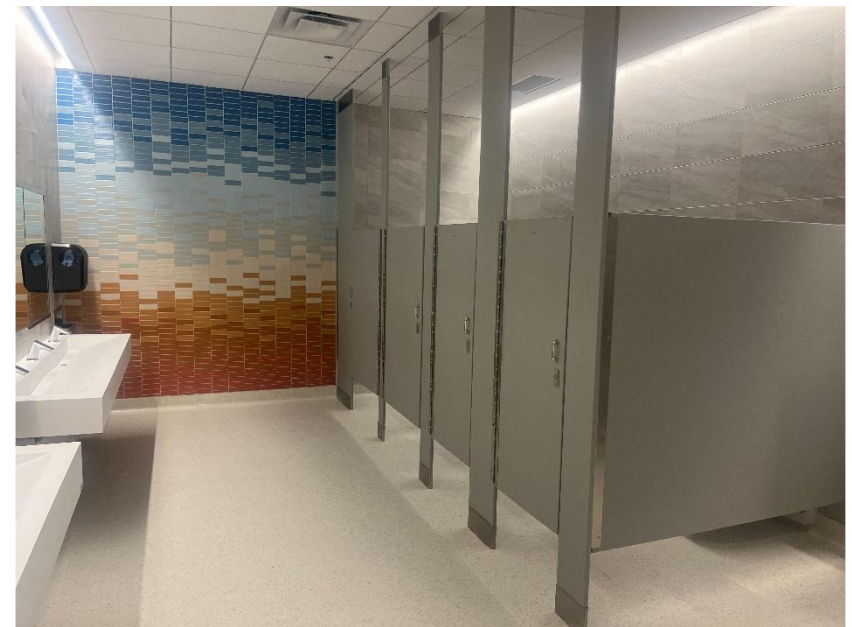
Solutions:

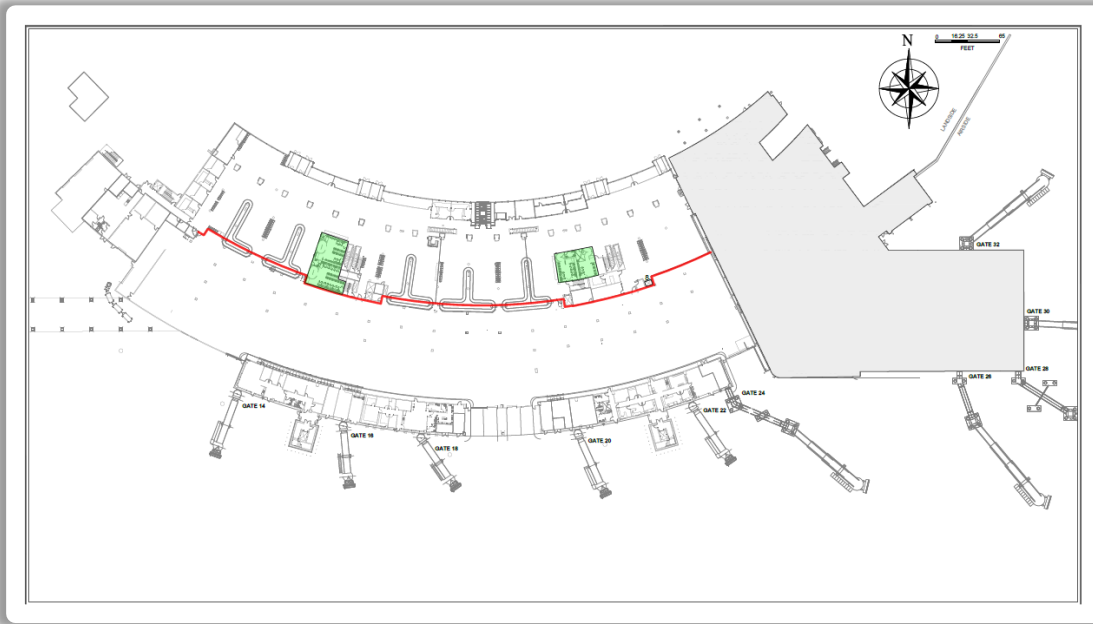
- Install automated door systems, provide clear signage, and optimize pathways
- Replace old fixtures with modern, ADA-compliant, and efficient toilets and sinks
- Expand footprints

Existing

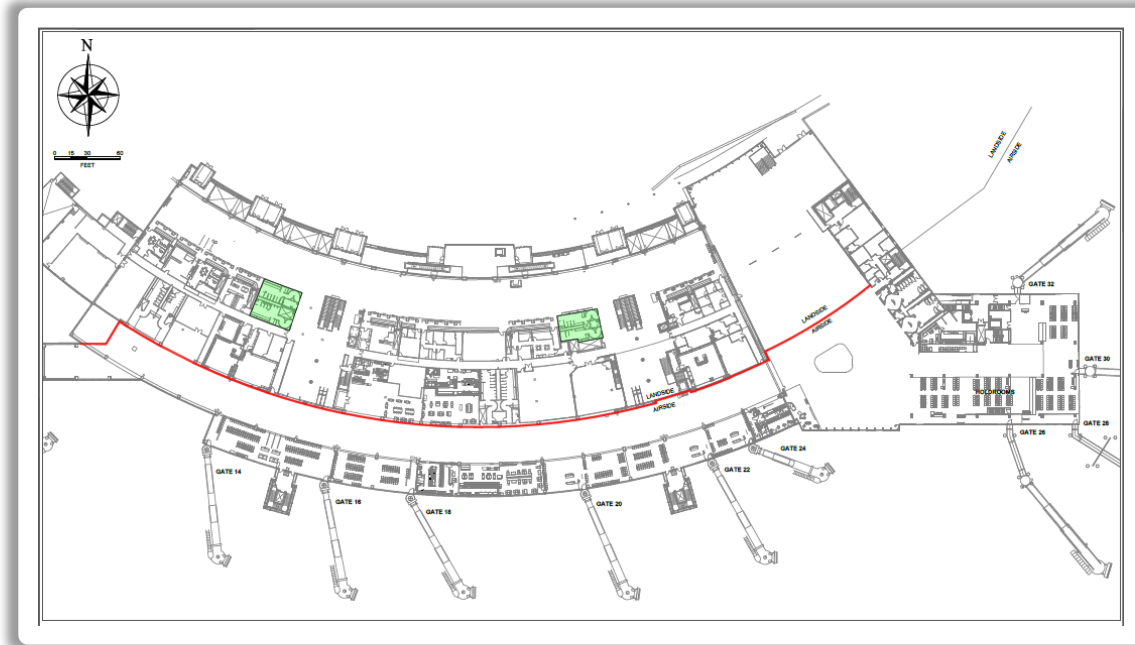


New





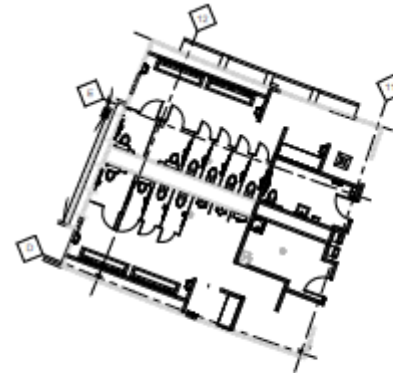
Level One



Level Two

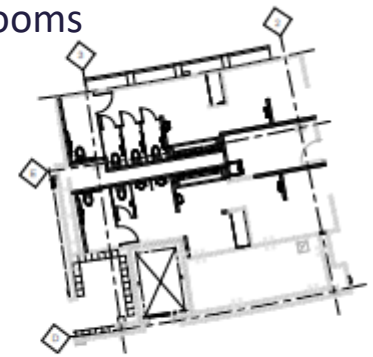
Total Budget

AIP - Entitlement	\$0
AIP – Req. Discretionary	\$0
AIG – Allocation	\$0
ATP	\$2,621,472
Earmark	\$0
OCAT	\$137,972
Total	\$2,759,444



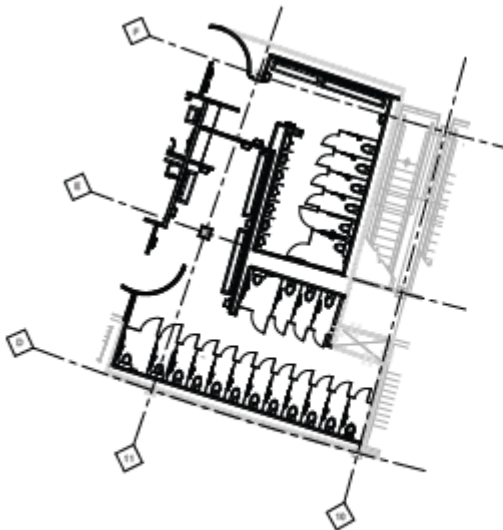
Level II Restrooms

ENLARGED CODE COMPLIANCE PLAN
20805 WOMEN & 20808 MEN
2 SCALE: 1/8" = 1'-0"

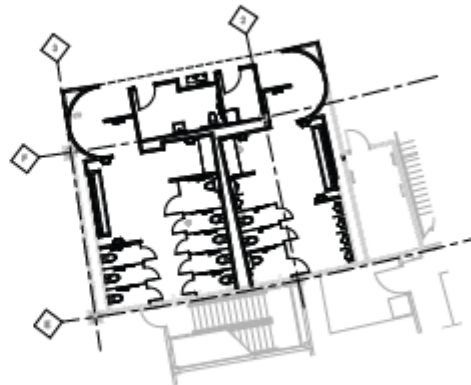


ENLARGED CODE COMPLIANCE PLAN
20908 WOMEN & 20912 MEN
3 SCALE: 1/8" = 1'-0"

Level I Restrooms



ENLARGED COMPLIANCE PLAN
10813 MEN & 10816 WOMEN
2 SCALE: 1/8" = 1'-0"



ENLARGED COMPLIANCE PLAN
10914 WOMEN & 10916 MEN
3 SCALE: 1/8" = 1'-0"

Phase II will consist of a total of 2,787 SF of renovated area.

Issues:

- Panel cracking
- Scaling and raveling
- Transverse cracking
- Aging infrastructure

Solutions:

- Full and partial slab replacement
- Joint sealant replacement
- Crack and spall repair
- Mill and overlay taxiway shoulders
- Upgrade runway lighting



Total Budget

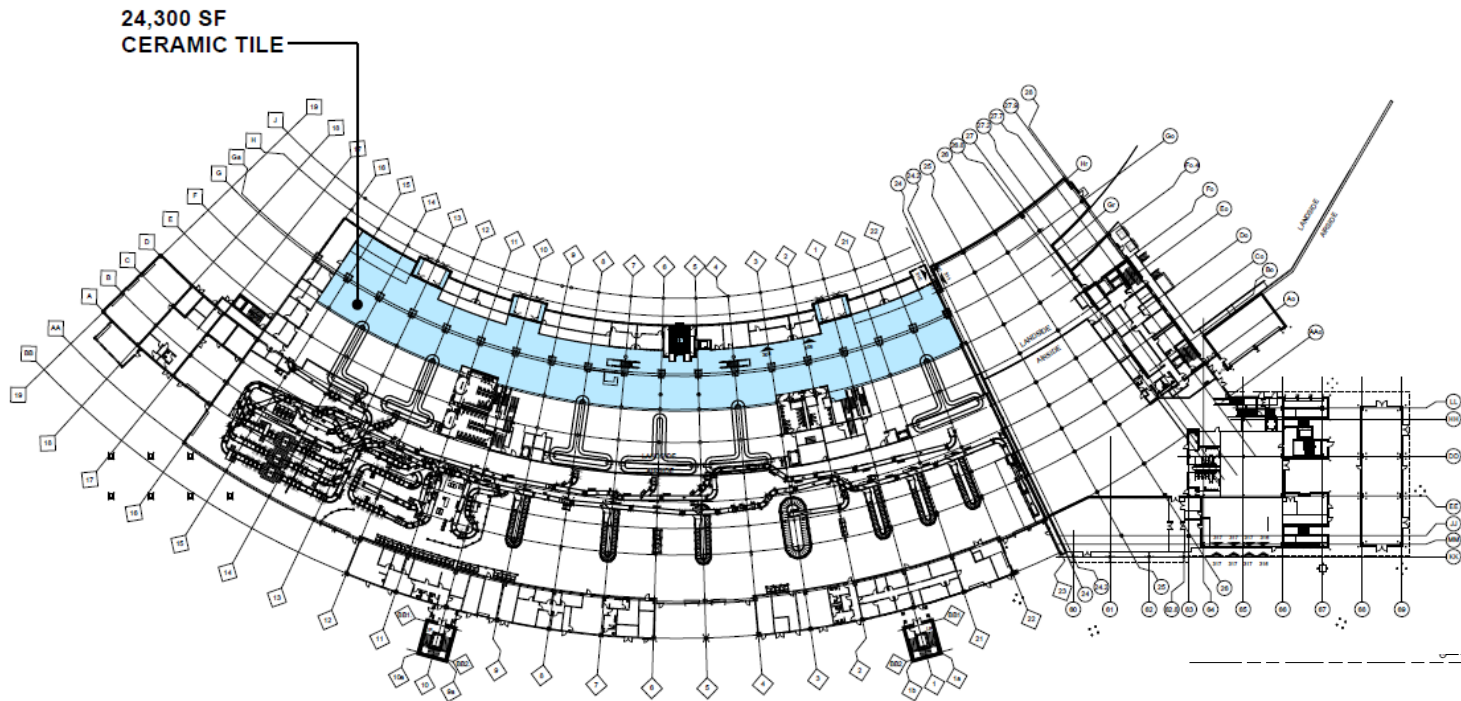
AIP - Entitlement	\$12,432,886
AIP – Req. Discretionary	\$752,749
AIG – Allocation	\$0
ATP	\$0
Earmark	\$0
OCAT	\$1,465,071
Total	\$14,650,706



Project consists of approximately 8,800 LF at 150 FT wide, plus 35' shoulders and approximately 122,822 SY of shoulder and blast pads.

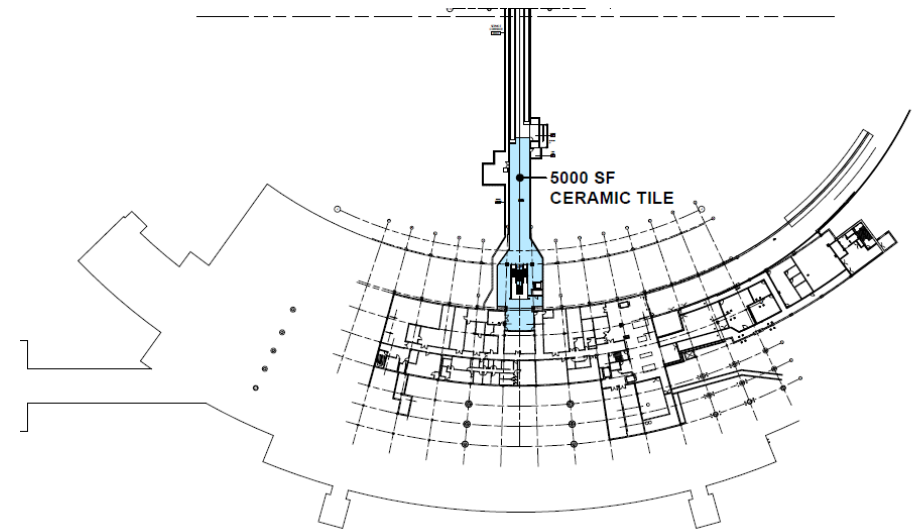
Continuation of Terminal Building Flooring project to replace deteriorating porcelain tile flooring with terrazzo.





Total Budget

AIP - Entitlement	\$0
AIP – Req. Discretionary	\$0
AIG – Allocation	\$3,286,346
ATP	\$0
Earmark	\$0
OCAT	\$365,150
Total	\$3,651,496



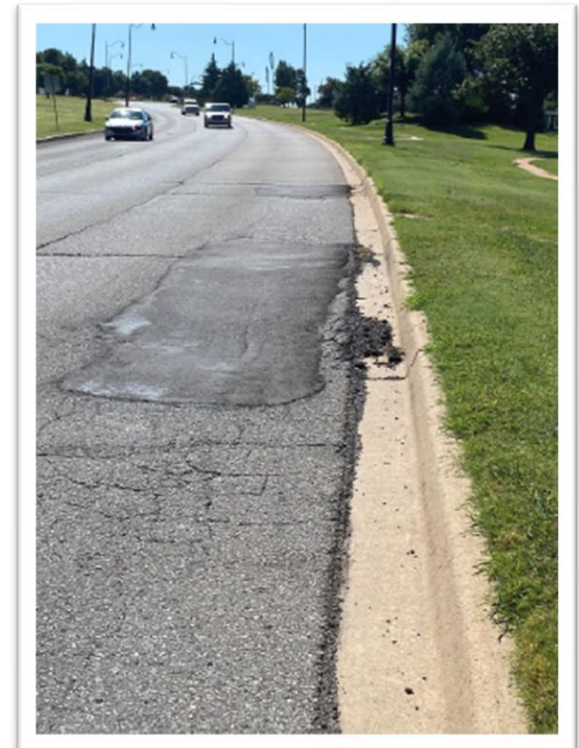
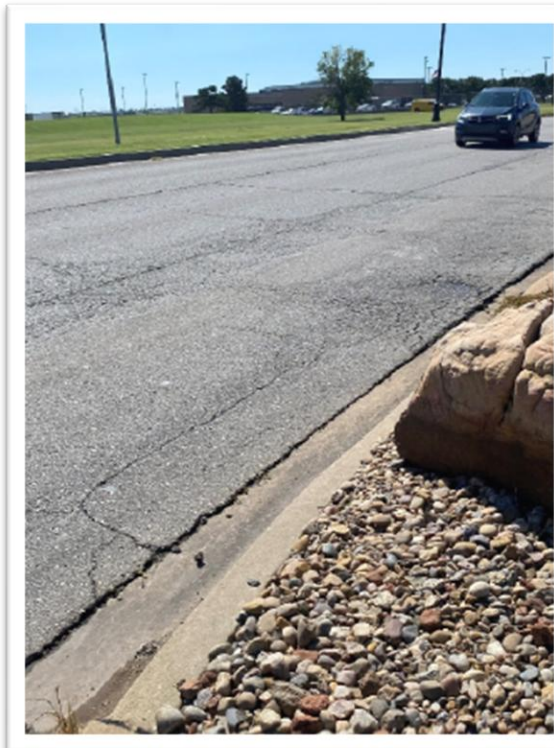
Phase II consists of the first level of the terminal with a total of 29,300 SF

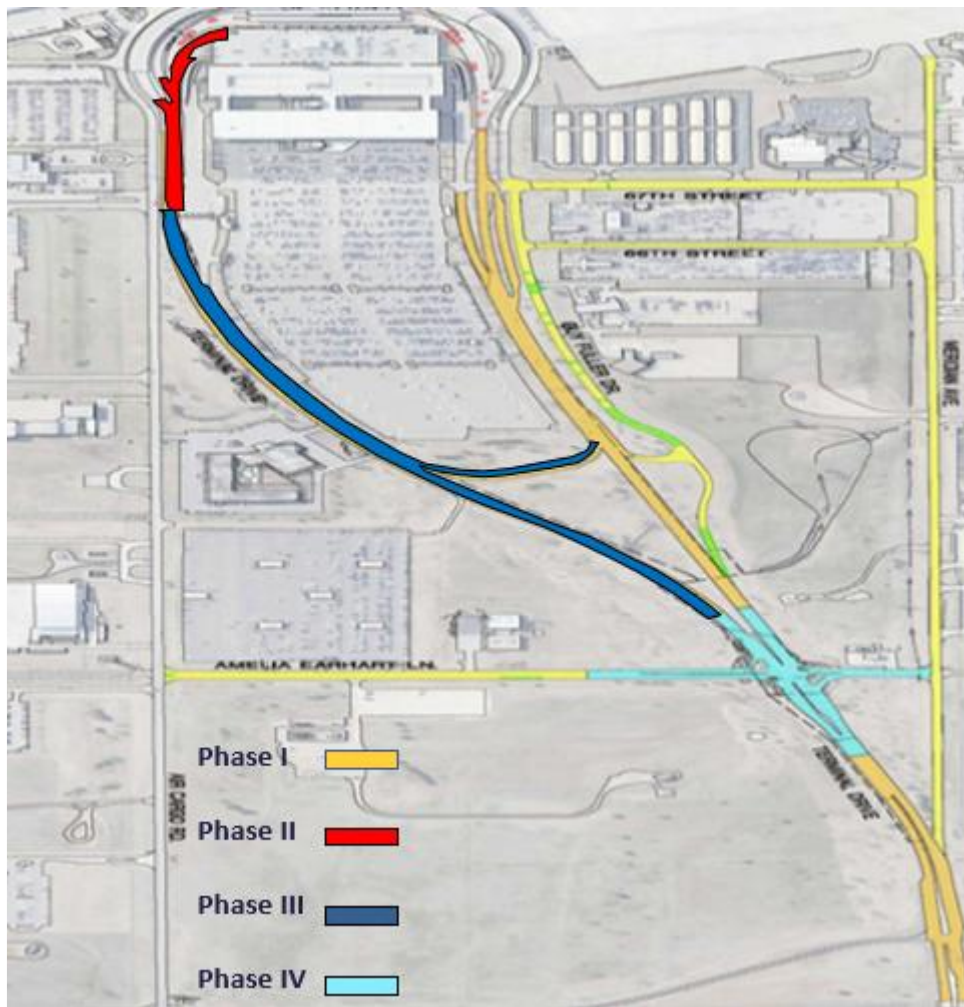
Issues:

- Inadequate sub-grade conditions
- Rutted pavement
- Alligator cracking
- Inadequate drainage

Solutions :

- Enhance sub-grade conditions
- Install geogrid, aggregate base course, and surface course
- Replace drainage structures and stormwater collection system





Project consists of rehabilitation/replacement of approximately:

- 8,800 SY of pavement
- 4,400 LF of curb and gutter
- 2,000 LF of stormwater collection system pipe.

Total Budget

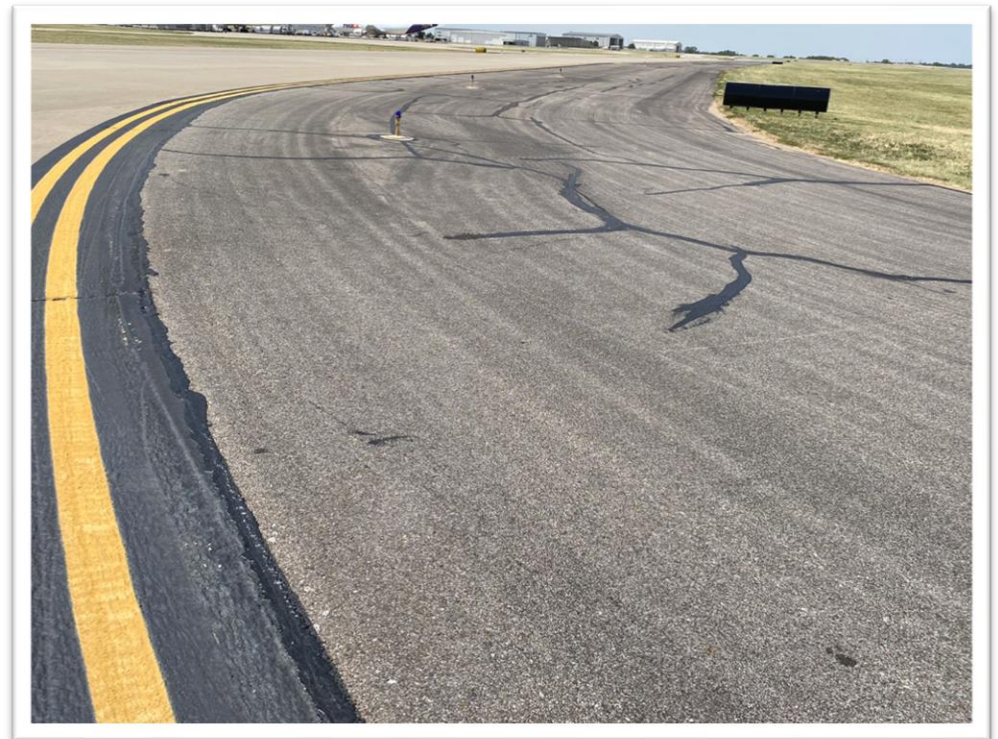
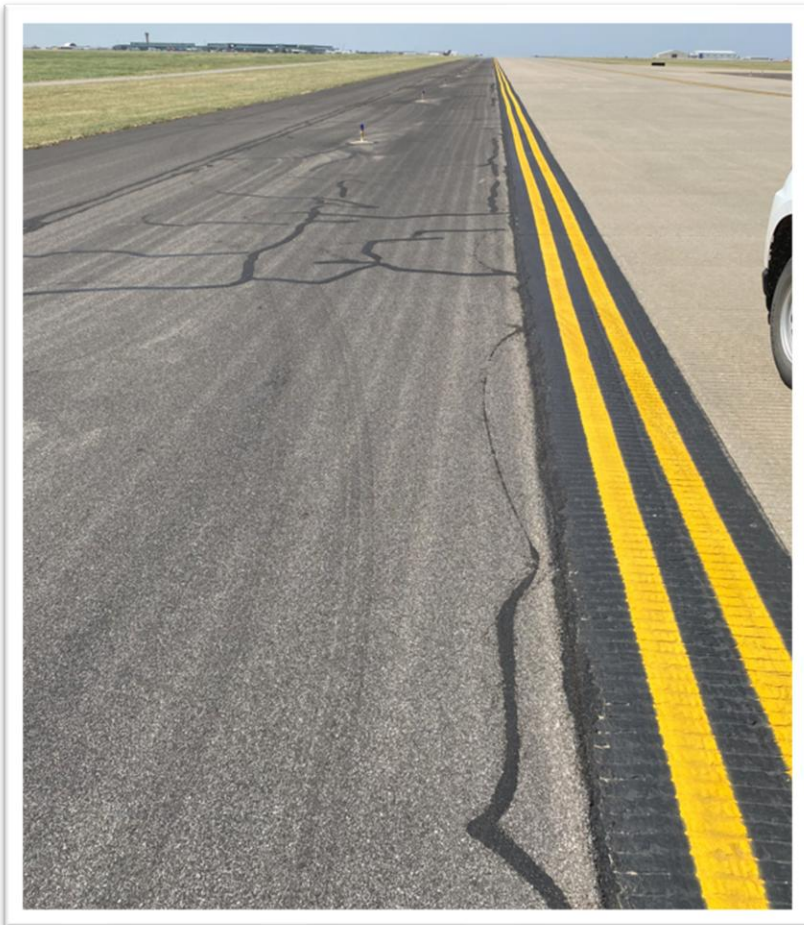
AIP - Entitlement	\$0
AIP – Req. Discretionary	\$0
AIG – Allocation	\$1,869,398
ATP	\$0
Earmark	\$0
OCAT	\$282,102
Total	\$2,151,500

Issues:

- Surface distress and surface integrity
- Deteriorated pavement

Solutions:

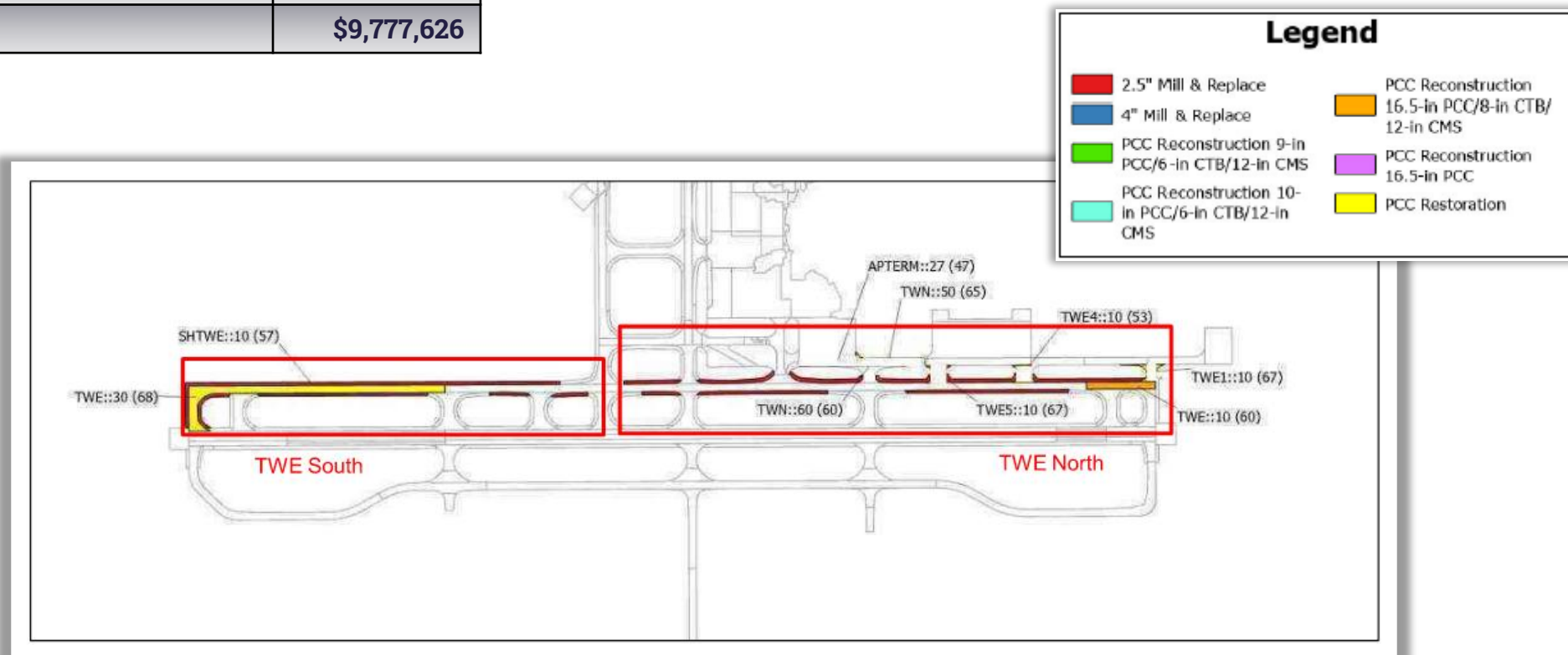
- Concrete joint and spall repair
- Partial and full concrete slab replacements on isolated areas as needed
- Mill and replace shoulders



Total Budget

AIP - Entitlement	\$5,358,129
AIP – Req. Discretionary	\$3,312,543
AIG – Allocation	\$0
ATP	\$0
Earmark	\$0
OCAT	\$1,106,954
Total	\$9,777,626

Project involves rehabilitation of approximately 3,200 feet of Taxiway E (240,000 sq ft) and 57,679 square yards of shoulder mill and replace.



Issues:

- Panel cracking
- Deteriorating joint sealant
- Severe scaling
- Raveling of the surface
- Age-related deterioration

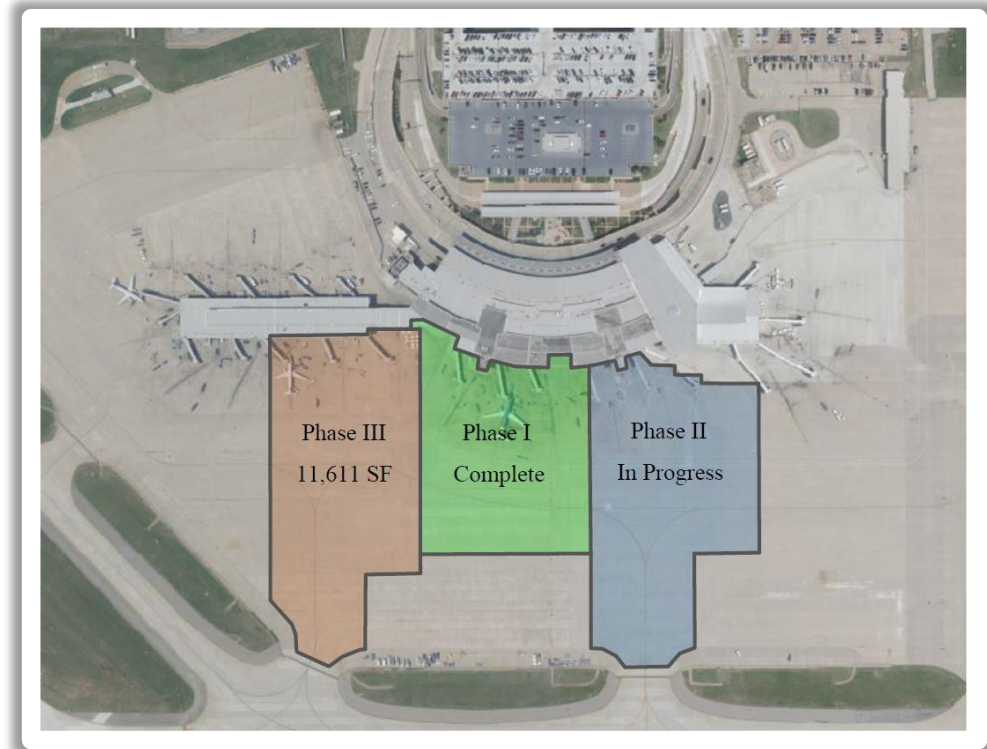
Solutions:

- Replace panels to enhance load-bearing capacity
- Partial and full depth patching
- Resealing joints



Total Budget

AIP - Entitlement	\$5,358,129
AIP – Req. Discretionary	\$1,661,953
AIG – Allocation	\$0
ATP	\$0
Earmark	\$0
OCAT	\$780,009
Total	\$7,800,091



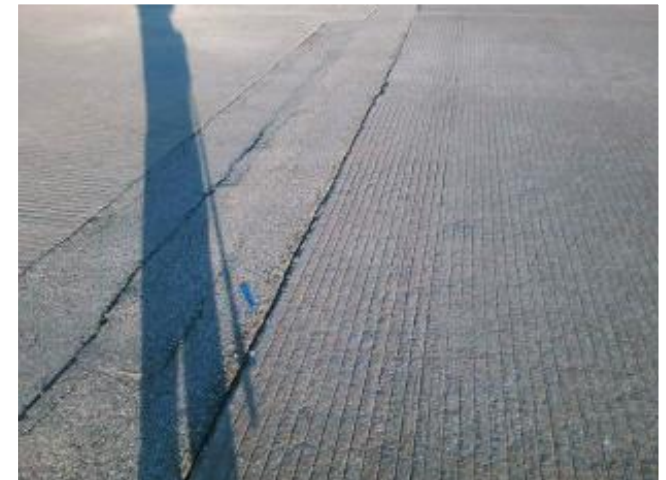
Phase III will include 11,661 square feet of reconstructed pavement.

Issues:

- Spalling
- Areas of deterioration
- Linear cracking
- Outdated lighting

Solutions:

- Replace deteriorating shoulders
- Partial- and full-depth patching
- Isolated panel replacement
- 2.5" mill and replace
- Replace edge and sign lighting

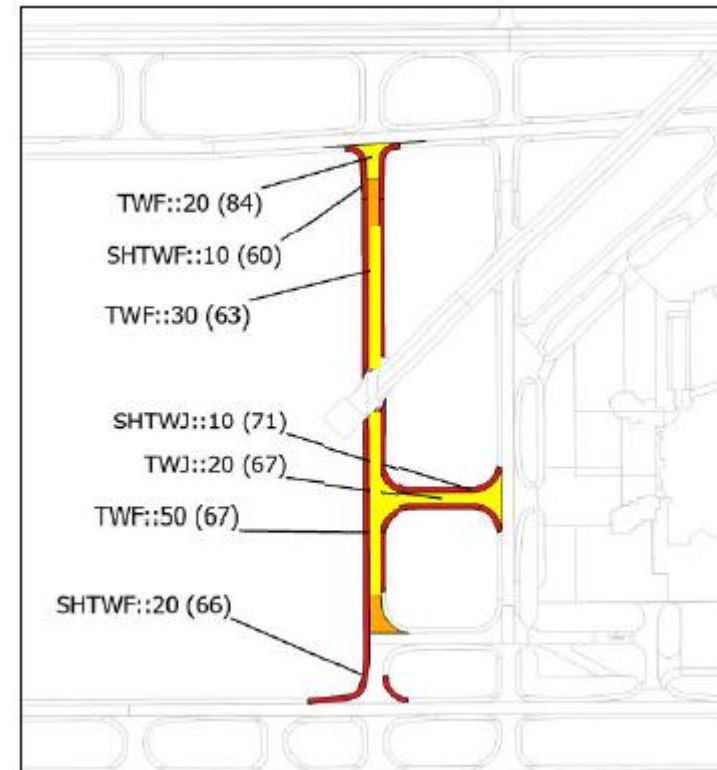


Total Budget

AIP - Entitlement	\$5,358,129
AIP – Req. Discretionary	\$2,834,702
AIG – Allocation	\$0
ATP	\$0
Earmark	\$0
OCAT	\$910,315
Total	\$9,103,146

Legend

2.5" Mill & Replace	PCC Reconstruction 16.5-in PCC/8-in CTB/12-in CMS
4" Mill & Replace	PCC Reconstruction 16.5-in PCC
PCC Reconstruction 9-in PCC/6-in CTB/12-in CMS	PCC Restoration
PCC Reconstruction 10-in PCC/6-in CTB/12-in CMS	



Wiley Post Airport (PWA)

Total Federal Capital Plan:
\$25,648,760



Issues:

- Significant wear and tear
- Rust, corrosion, and structural damage
- No controlled access for vehicles or pedestrians
- No wildlife intrusion protection

Solutions:

- Dismantle and dispose of old fence
- Install a taller profile and thicker gauge fence
- Add controlled access gates
- Add extra fencing mesh for security and wildlife control



Total Budget

AIP - Entitlement	\$0
AIP – Req. Discretionary	\$0
AIG – Allocation	\$2,225,000
ATP/FCT	\$0
Earmark	\$0
ODAA	\$0
OCAT	\$247,222
Total	\$2,472,222

Fence perimeter will be up to 14,000 linear feet with 1 pedestrian gate and 7 vehicular gates.

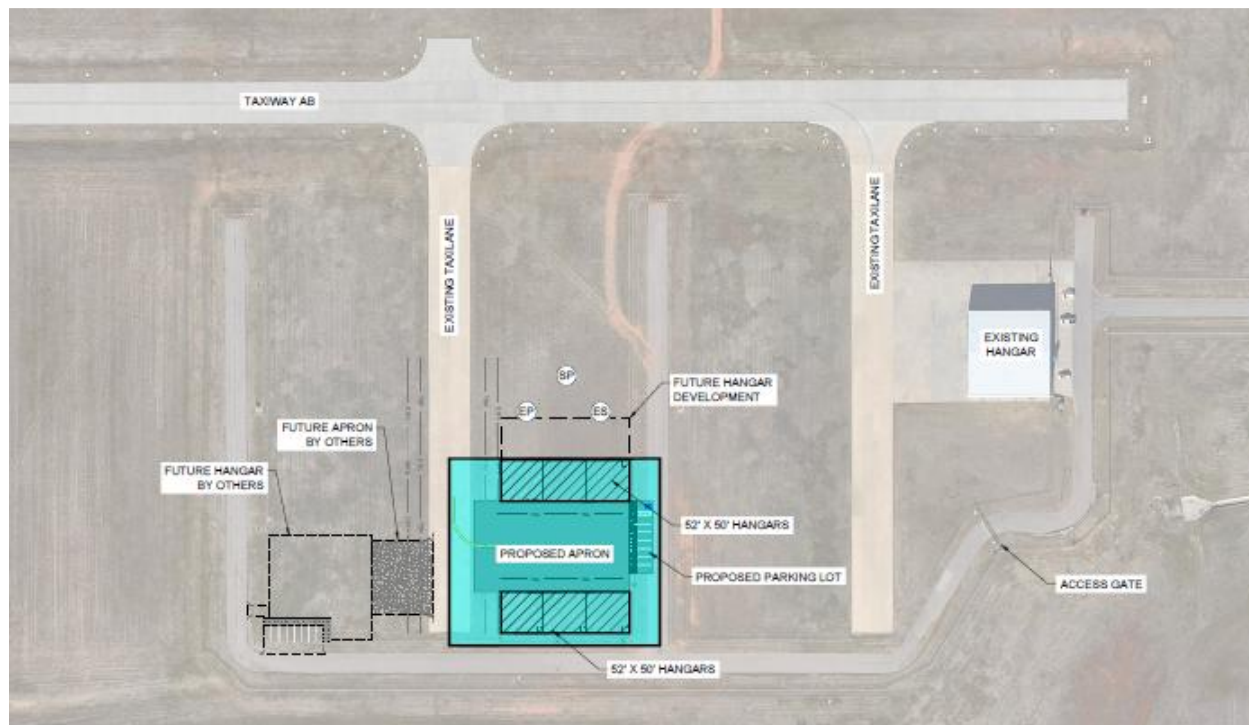


Issues:

- High demand for hangar space
- Low availability

Solution:

- Develop a cluster of 6 hangars
- Construct 52'x50' hangars



Total Budget




AIP - Entitlement	\$0
AIP – Req. Discretionary	\$0
AIG – Allocation	\$0
ATP	\$0
Earmark	\$0
ODAA	\$1,400,000
OCAT	\$2,225,000
Total	\$3,625,000

Issues:

- Current tower is 64 years old
- No elevator
- Line of sight issues
- Out of date equipment

Solutions:

- Relocate tower and increase height to optimize line of sight
- Include accessibility features, such as an elevator
- Update systems and equipment

LEGEND	
	EXISTING TOWER LOCATION
	PROPERTY LINE
	AREA NOT VISIBLE BY EXISTING TOWER
APPROX. 674,000 S.Y. OF AIRPORT PROPERTY ARE NOT VISIBLE BY THE EXISTING TOWER	



Total Budget

AIP - Entitlement	\$0
AIP – Req. Discretionary	\$0
AIG – Allocation	\$0
ATP/FCT*	\$13,252,989
Earmark**	\$16,848,000
ODAA	\$0
OCAT	\$697,526
Total	\$13,950,515

Siting study determined a new tower height, with an increase from 39 FT to 88 FT.

*The Trust will compete for federal funding, however an Earmark has been submitted for this project.

**Earmark funding was requested off 2024 JPC numbers that included design, which is currently underway with grant funding.



Issues:

- Increased size of aircraft usage
- Spalling, cracking, and FOD
- Unsafe grade changes causing porpoising and drainage problems

Solutions:

- Sealcoat, crack repair, and settlement patching
- Removal of deteriorated asphalt patching
- Texturing ruts
- Isolated areas of panel replacement and drainage upgrades



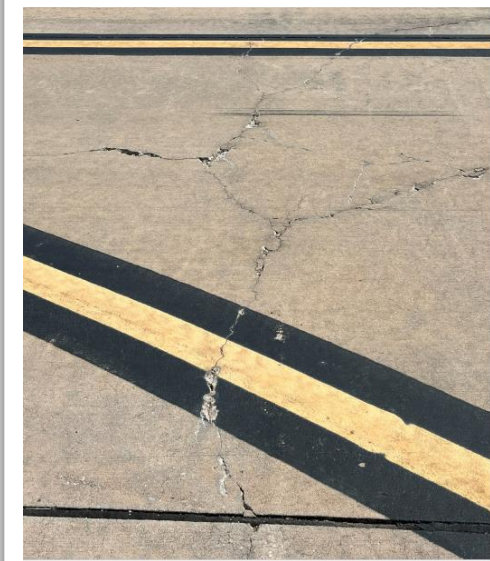
Taxiway A



Taxiway B & Drainage



- Taxiway A between A2 and A7, including the turnoffs: approximately 289,517 square feet.
- Adjacent asphalt on the terminal ramp: 61,021 square feet.
- Taxiway A between the ramp and A4: 25,357 square feet.
- Taxiway B: 3730' long and 50' wide.



Total Budget

AIP - Entitlement	\$300,000
AIP – Req. Discretionary	\$1,778,068
AIG – Allocation	\$0
ATP	\$0
ODAA (ODAA & State Apportionment)	\$425,000
OCAT	\$278,119
Total	\$2,781,187

Issues:

- Failing joint sealant
- Lighting inconsistencies
- Cracks and spalls
- Old paint and markings

Solutions :

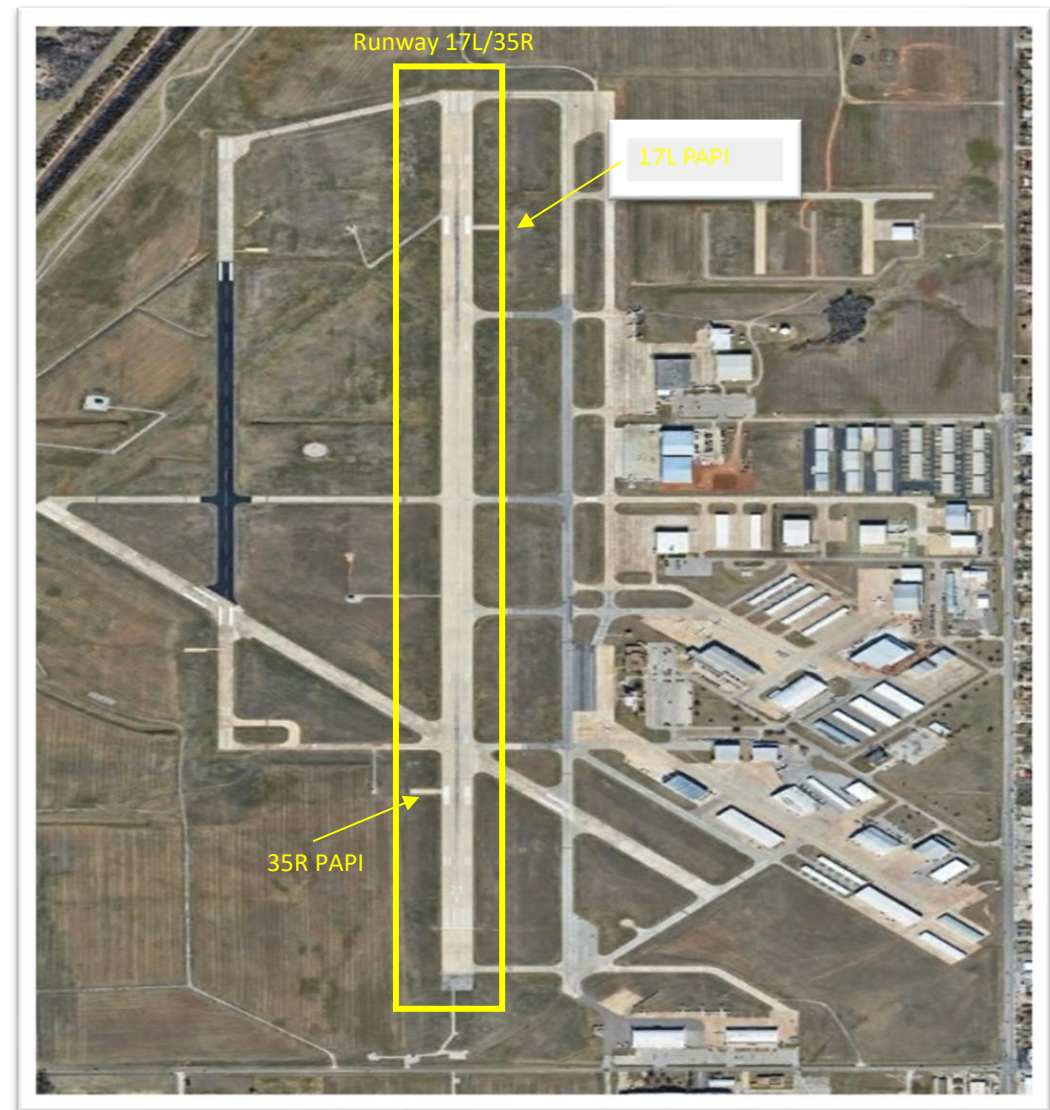
- Repair cracks and spalls
- Remove and replace joint sealant
- Isolated full panel replacements
- Apply new markings
- Upgrade edge lights and PAPI's to LED



Total Budget

AIP - Entitlement	\$450,000
AIP – Req. Discretionary	\$1,583,981
AIG – Allocation	\$0
ATP	\$0
ODAA (State Apportionment)	\$503,871
OCAAT	\$281,984
Total	\$2,819,836

The runway measures 7,199 feet in length and 150 feet in width, totaling approximately 1,079,850 square feet.





Clarence E. Page Airport (RCE)

Total Federal Capital Plan:
\$2,504,608





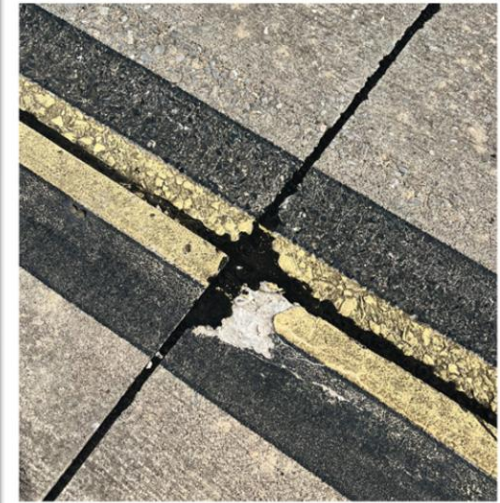
Rehabilitate Taxiway A & Connectors FFY 2026

Issues:

- Significant wear and deterioration
- Delaminated spall areas
- Isolated structural deficiencies
- Old paint and markings

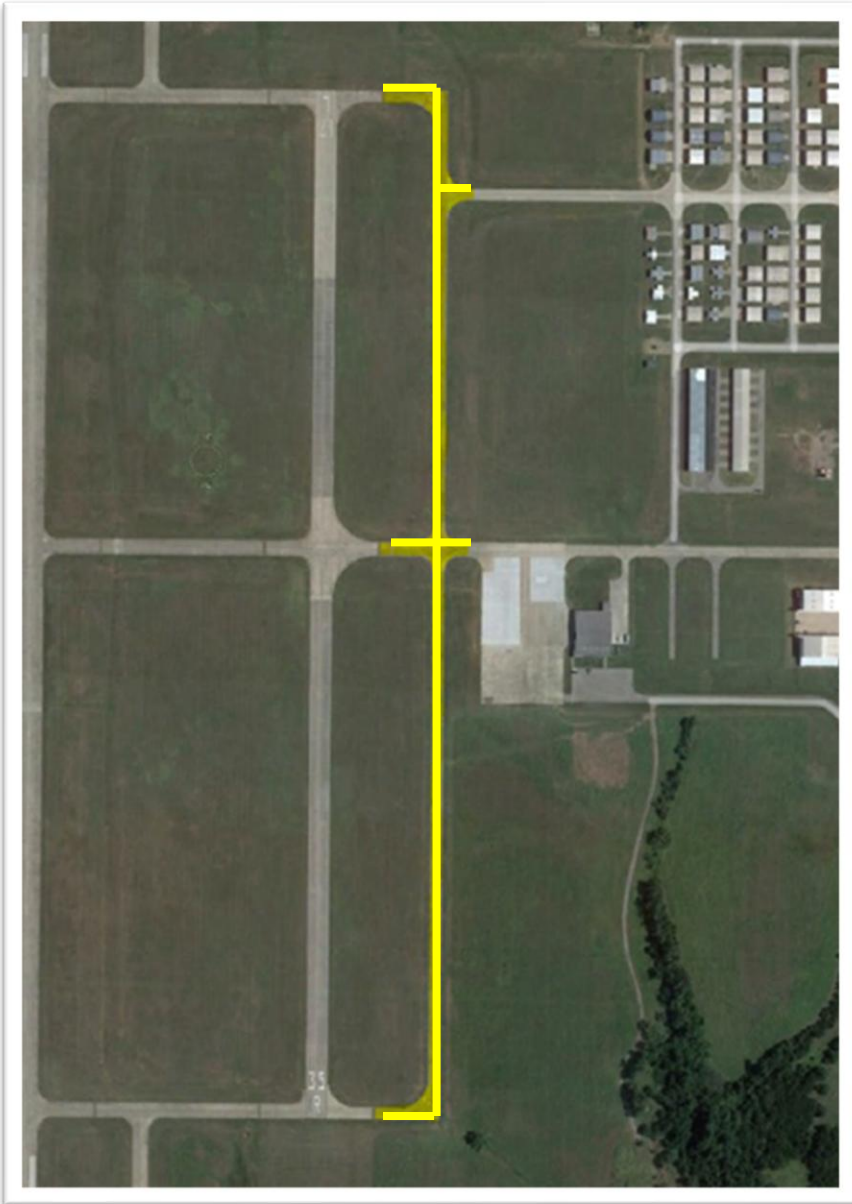
Solutions:

- Remove and replace damaged sections
- Repair and reseal joints
- Reinforce subbase
- Update surface markings





Rehabilitate Taxiway A & Connectors FFY 2026



Project will consist of 3,500 FT for Taxiway A and 623 FT for the Connectors.

Total Budget

AIP - Entitlement	\$450,000
AIP – Req. Discretionary	\$0
AIG – Allocation	\$219,757
ATP	\$0
ODAA	\$0
OCAT	\$208,649
Total	\$878,406



Rehabilitate 17R/35L Pavement and Edge Lights FFY 2030

Issues:

- Cracks and spalls
- Old paint and markings
- Incandescent lights

Solutions:

- Repair cracks and spalling
- Repair and replace joint seal
- Apply new paint and markings
- Upgrade lights to LEDs





Rehabilitate 17R/35L Pavement and Edge Lights FFY 2030



Runway measures 6,013 feet in length with 108 feet in width; approximately 649,729 square feet in total.

Total Budget

AIP - Entitlement	\$600,000
AIP – Req. Discretionary	\$782,677
AIG – Allocation	\$0
ATP	\$0
ODAA	\$80,905
OCAT	\$162,620
Total	\$1,626,202

Questions



Oklahoma City Airport Trust Contacts

Jeff Mulder, A.A.E.

*Director of Airports
jeff.mulder@okc.gov*

Scott Keith

*Assistant Director of Airports
scott.keith@okc.gov*

Tara Summerlin

*Assistant Director of Airports
tara.summerlin@okc.gov*

John Storms

*Director of Planning & Development
john.storms@okc.gov*

Kristy Slater

*General Aviation Manager
kristy.slater@okc.gov*

Pamela Martindale

*Senior Financial Services Manager
pamela.martindale@okc.gov*